

**Bob Wang
Team**

Trust, deliver.

Bob Wang Team

OAKVILLE LUXURY REAL ESTATE

JUST LISTED

DETACHED · RESIDENTIAL FREEHOLD

MLS® W13141860



OFFERED AT

1364 Acton Crescent

MORRISON · SOUTH EAST OAKVILLE · L6J 2S5

LIST PRICE

\$3,699,900

5
BEDROOMS

7
BATHROOMS

4,636^{sf}
FINISHED

48 × 126
LOT (FT)

2017
YEAR BUILT

8
PARKING

The Residence

Set within **Morrison** – one of South East Oakville's most established communities, known for mature streetscapes and top-tier schools.

Backing onto **Morrison Creek ravine** with prized southwest exposure, this **modern custom residence** offers over **4,600 sq.ft.** of contemporary living, a chef-inspired kitchen with **Sub-Zero, Wolf and Miele** appliances, and custom millwork throughout.

Five bedrooms each with private ensuite, a spa-inspired primary retreat, and a fully **walk-out lower level** opening to a private ravine setting.

HIGHLIGHTS

- ◆ Backs onto **Morrison Creek ravine** · SW exposure
- ◆ **Radiant heated flooring** on all three levels
- ◆ **5 bedrooms, all ensuite** · 7 baths total
- ◆ Chef's kitchen – **Sub-Zero · Wolf · Miele**
- ◆ **Walk-out lower level** with custom wet bar
- ◆ **Hunter Douglas** window coverings · custom millwork
- ◆ Future **pool potential**
- ◆ Top public & private school district

**Bob Wang
Team**

Trust, deliver.

LISTING AGENT

Bob Wang

647.892.8299
Realtor®

CO-LISTING AGENT

Elisa Zhang

647.839.6155
Realtor®

VISIT US AT

bobwanghomes.ca

Trust, deliver.

RE/MAX

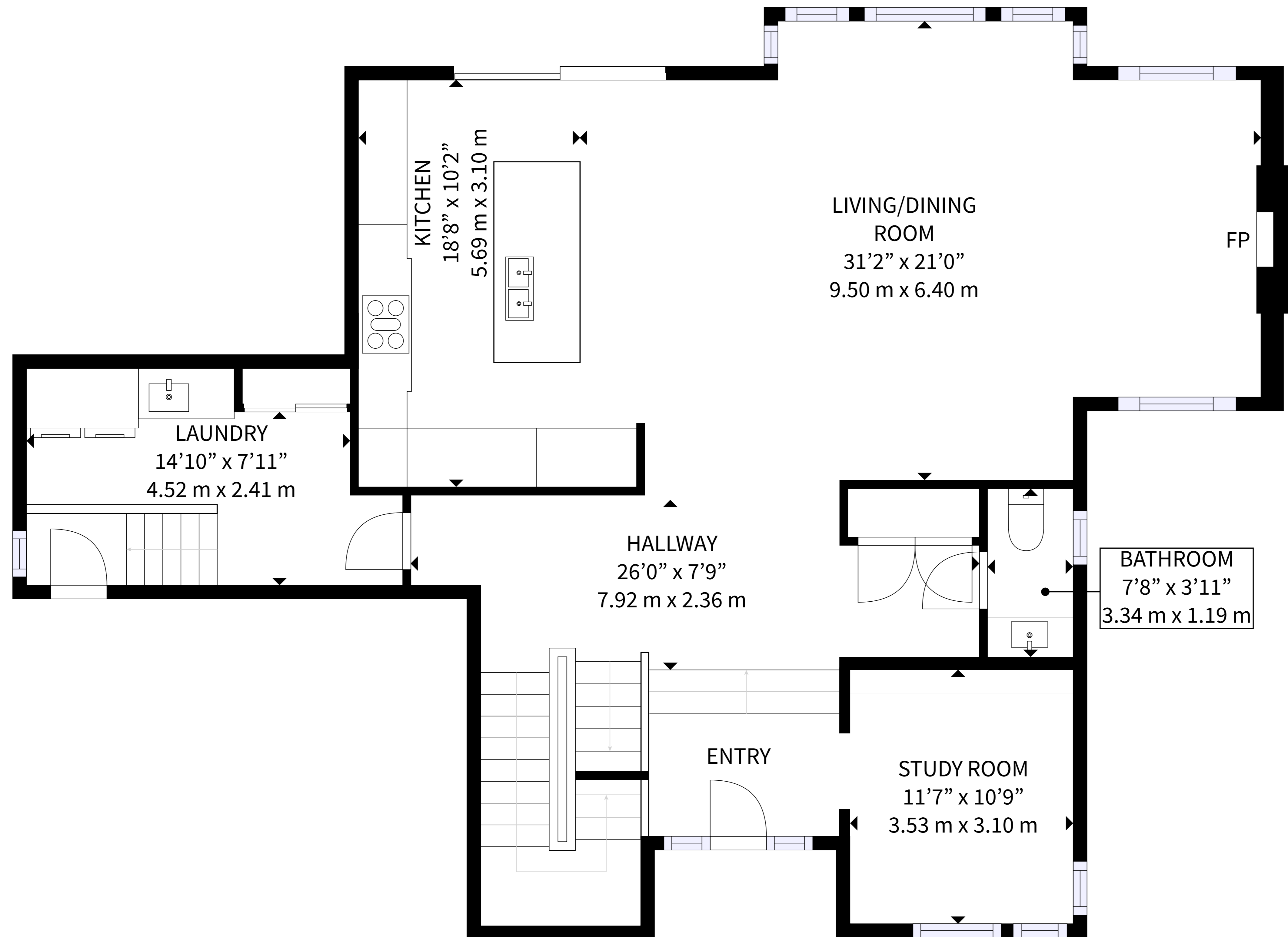
ABOUTTOWNE REALTY CORP.,
BROKERAGE

1235 N SERVICE RD W
#100D, OAKVILLE

905.338.9000

INDEPENDENTLY OWNED &
OPERATED

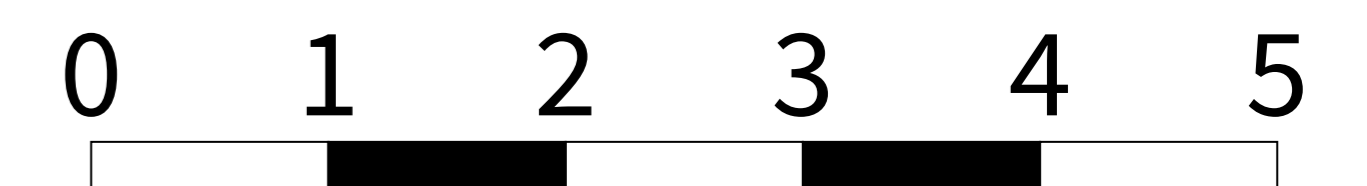
Floor Plan - 1364 Acton Crescent, Oakville



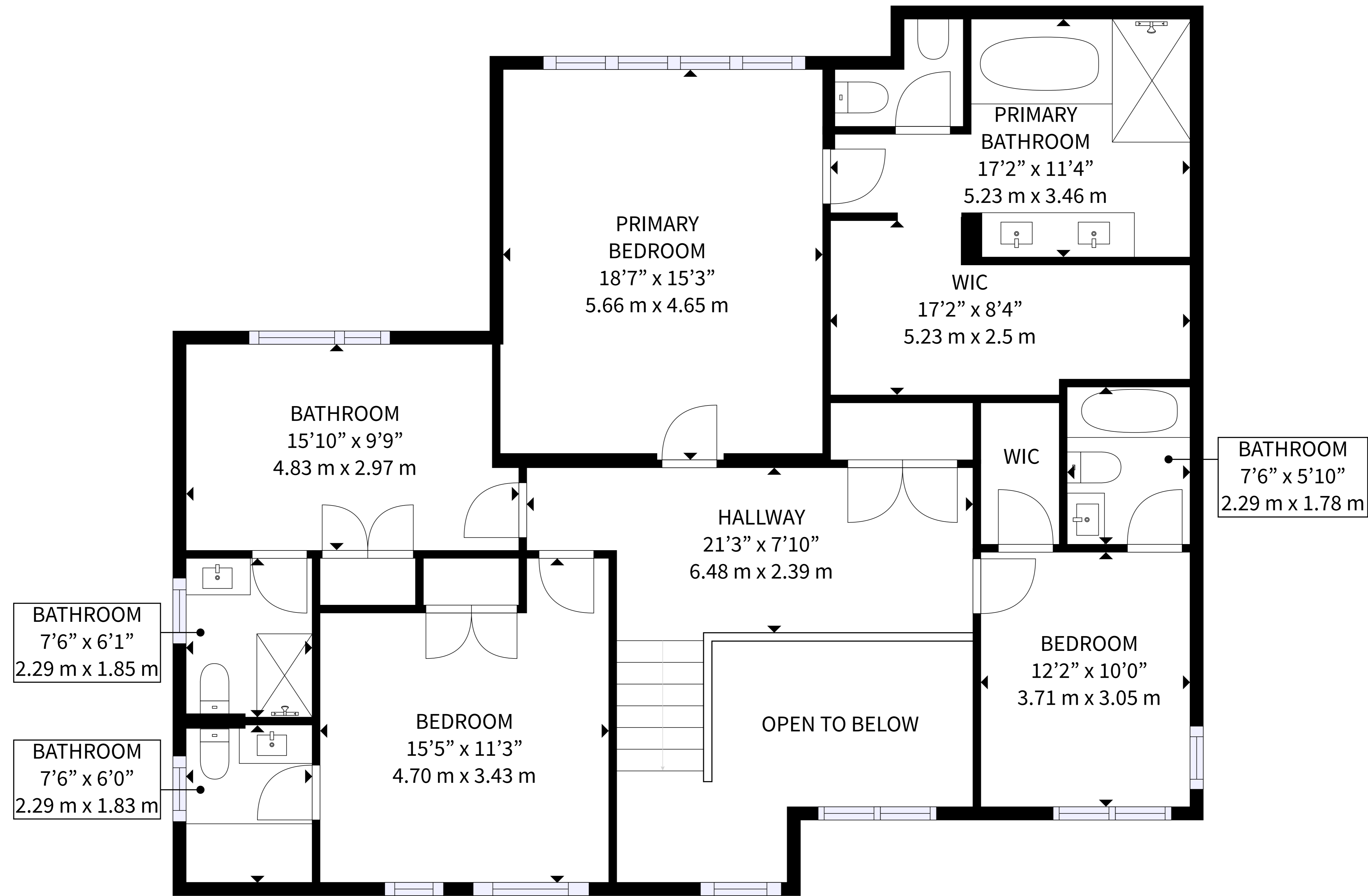
Main Floor

GROSS INTERNAL AREA
BASEMENT: 1,304 sq. ft, 121 m² FLOOR 1: 1,589 sq. ft, 148 m²
FLOOR 2: 1,743 sq. ft, 163 m²
TOTAL AREA: 4,636 sq. ft, 431 m²

SIZES AND DIMENSIONS ARE APPROXIMATE, ACTUAL MAY VARY.

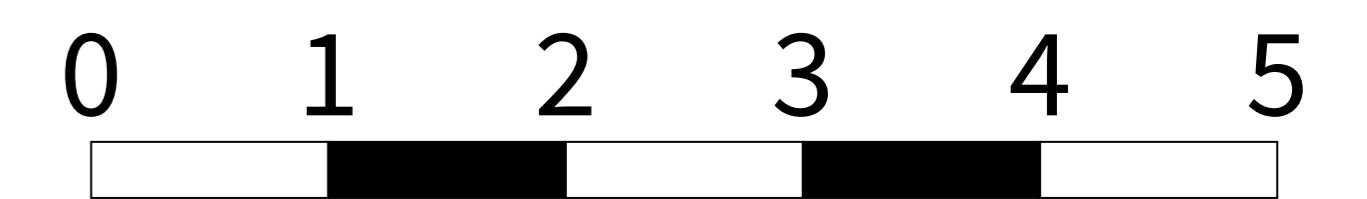


Floor Plan - 1364 Acton Crescent, Oakville



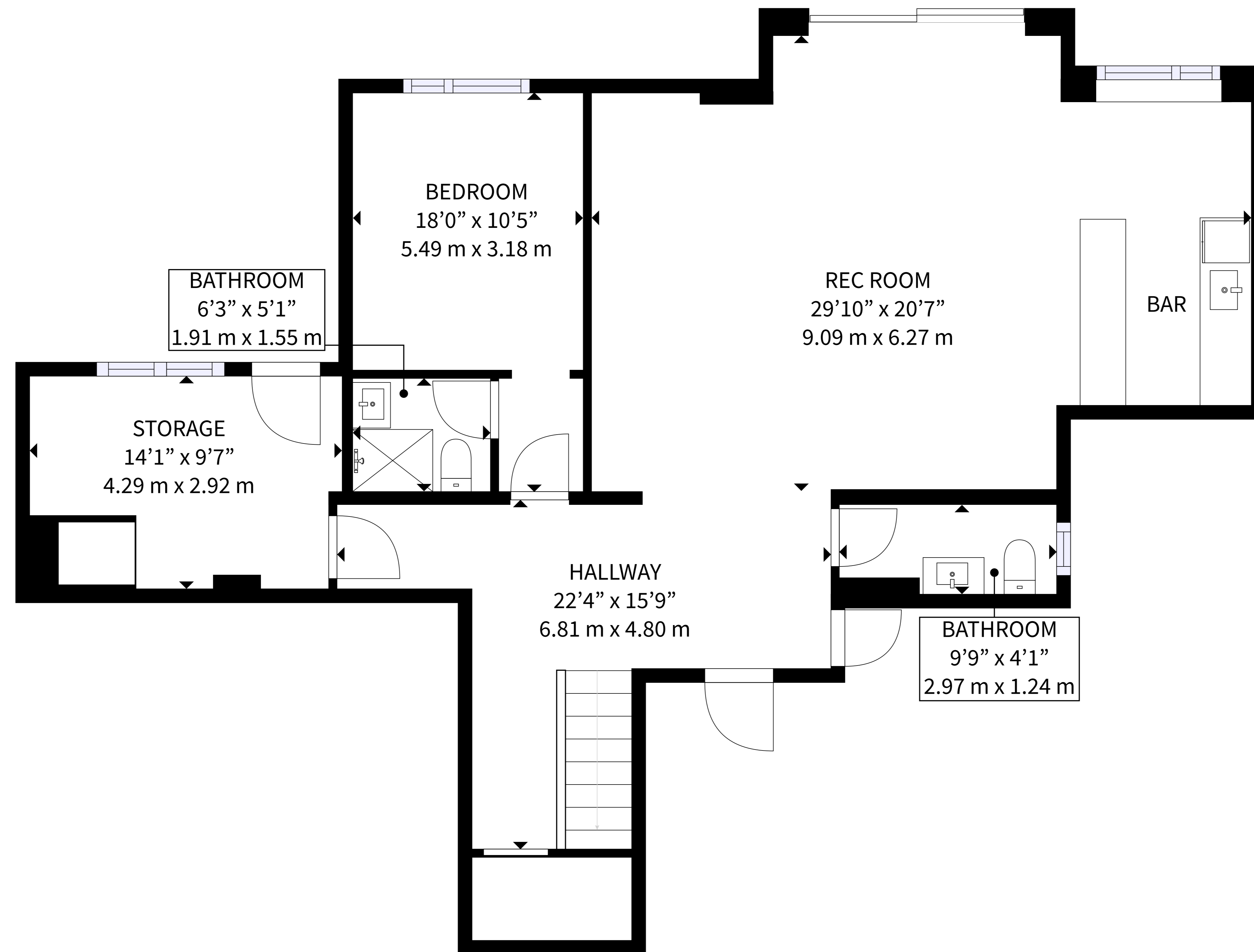
Upper Level

GROSS INTERNAL AREA
 BASEMENT: 1,304 sq. ft, 121 m² FLOOR 1: 1,589 sq. ft, 148 m²
 FLOOR 2: 1,743 sq. ft, 163 m²
 TOTAL AREA: 4,636 sq. ft, 431 m²



SIZES AND DIMENSIONS ARE APPROXIMATE, ACTUAL MAY VARY.

Floor Plan - 1364 Acton Crescent, Oakville



Lower Level

GROSS INTERNAL AREA
BASEMENT: 1,304 sq. ft, 121 m² FLOOR 1: 1,589 sq. ft, 148 m²
FLOOR 2: 1,743 sq. ft, 163 m²
TOTAL AREA: 4,636 sq. ft, 431 m²

SIZES AND DIMENSIONS ARE APPROXIMATE, ACTUAL MAY VARY.

